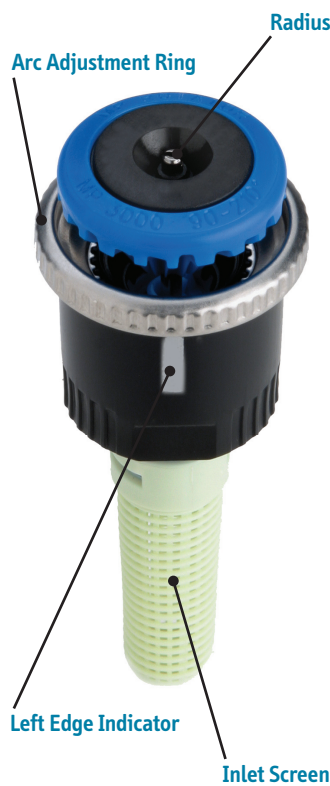




Easy radius adjustment.



Easy arc adjustment.



Radius Adjustment Screw

Arc Adjustment Ring

Left Edge Indicator

Inlet Screen

- 1. Arc Adjustment:**  
 (Excludes 360 models)
  - Install the MP Rotator with the **Left Edge Indicator** pointing to the left side of the desired watering direction.
  - With the MP Rotator operating and in the pop-up position, rotate the **Arc Adjustment Ring**:
    - Clockwise to increase the arc
    - Counter-clockwise to decrease the arc
- 2. Radius Adjustment:**
  - Factory setting is for full radius. Radius can be reduced by 25%.
  - With the MP Rotator tool or small, flat-bladed screwdriver, rotate the **Radius Adjustment Screw**:
    - Clockwise to decrease the arc
    - Counter-clockwise to increase the arc.

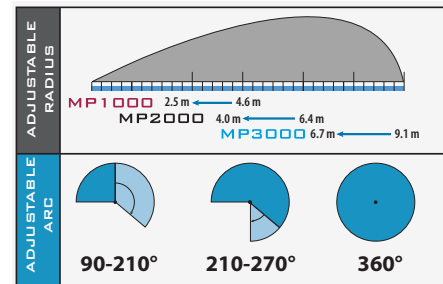


## MP ROTATOR®

### The Ideal 2.5 m-9 m Solution

**Maintain Matched Precipitation — Any Arc, Any Radius.**

All MP Rotator® sprinklers can be combined on the same zone for greater design and installation flexibility.



### Water Conservation

MP Rotators are more efficient than sprays because they apply water more slowly and evenly. In fact, you **use 30% less water** even though you run MP Rotators about twice as long as sprays. See below for comparison at 2.1 Bars/207 kPa with half-circle operation:

15H Spray Nozzle	7 litres/minute x 10 minute run time	= 70 litres
MP2000 90-210°	2.35 litres/minute x 20 minute run time	= 47 litres

**SAVINGS = 23 litres or 33%**

### Lower System Cost

The good news about applying water more slowly and evenly is that MP Rotators lower your system costs. You can run more heads off your water meter and reduce the number of zones required. In many cases, you can use smaller pipe. See below for comparison at 2.1 Bars/207 kPa with half-circle operation.

Flow (LPM)	Max. # 15H Sprays	Max. # MP2000s
60	8	25
80	11	35
8.3	20	59

1940 Diamond Street, San Marcos, California 92078  
 www.HunterIndustries.com • www.MPRotator.com



INT-622 12/07

**Hunter®**  
 The Irrigation Innovators

Auckland NZ  
 PH: (09) 919 7600  
 FAX: (09) 919 7604

www.aquaspec.co.nz

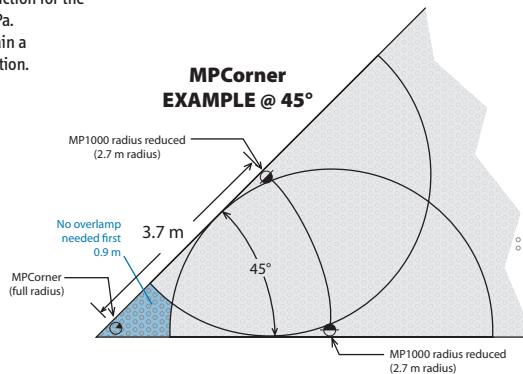
0800 353 966

Christchurch NZ  
 PH: (03) 968 3230  
 FAX: (03) 968 3231

### MP Rotator Performance Data – Metric

Arc	Pressure Bars	kPa	MP1000 Radius: 2.5 to 4.6 m Adjustable Arc and Full Circle Color Code: Maroon or Olive					MP2000 Radius: 4 to 6.4 m Adjustable Arc and Full Circle Color Code: Black, Green, or Red					MP3000 Radius: 6.7 to 9.1 m Adjustable Arc and Full Circle Color Code: Blue, Yellow, or Gray				
			Color	Radius m	LPH	Flow LPM	Precip mm/hr	Color	Radius m	LPH	Flow LPM	Precip mm/hr	Color	Radius m	LPH	Flow LPM	Precip mm/hr
90°	1.75	175	---	---	---	---	---	5.2	71	1.18	11	12	7.6	158	2.63	11	13
	2.00	200	3.7	36	0.61	11	12	5.5	74	1.23	10	11	8.2	166	2.77	10	11
	2.25	225	3.8	38	0.63	10	12	5.6	80	1.33	10	12	8.4	175	2.92	10	12
	2.50	250	4.0	41	0.68	10	12	5.8	86	1.43	10	12	8.5	185	3.08	10	12
	2.75	275	4.1	42	0.70	10	11	6.1	91	1.52	10	11	9.1	195	3.25	9	11
180°	3.00	300	4.3	44	0.73	10	11	6.4	94	1.57	9	11	9.1	203	3.38	10	11
	3.25	325	4.3	45	0.75	10	11	6.6	97	1.62	9	10	9.1	212	3.53	10	12
	3.50	350	4.4	47	0.78	10	11	6.7	101	1.68	9	10	9.1	220	3.67	11	12
	3.75	375	4.6	49	0.81	9	11	6.7	106	1.77	9	11	9.1	228	3.80	11	13
	270°	1.75	175	---	---	---	---	---	4.9	133	2.22	11	12	7.6	329	5.48	11
2.00		200	3.7	72	1.20	11	12	5.2	141	2.35	11	13	8.2	353	5.88	10	12
2.25		225	3.8	76	1.27	10	12	5.3	150	2.50	11	13	8.4	373	6.22	11	12
2.50		250	4.0	81	1.35	10	12	5.5	160	2.67	11	12	8.5	393	6.55	11	12
2.75		275	4.1	84	1.40	10	11	5.8	168	2.80	10	12	9.1	413	6.88	10	11
360°	3.00	300	4.3	88	1.46	10	11	6.1	174	2.90	10	11	9.1	431	7.18	10	12
	3.25	325	4.3	91	1.51	10	11	6.2	182	3.03	9	11	9.1	449	7.48	11	12
	3.50	350	4.4	94	1.56	10	11	6.4	189	3.15	9	10	9.1	466	7.77	11	13
	3.75	375	4.6	97	1.62	9	11	6.4	193	3.22	9	11	9.1	481	8.02	12	13
	Coming Soon	1.75	175	---	---	---	---	---	4.9	155	2.58	11	12	7.6	384	6.40	11
2.00		200	3.7	85	1.41	11	13	5.2	165	2.75	11	13	8.2	411	6.85	10	12
2.25		225	3.8	89	1.48	10	12	5.3	175	2.92	11	13	8.4	436	7.27	11	12
2.50		250	4.0	95	1.58	10	12	5.5	185	3.08	10	12	8.5	459	7.65	11	12
2.75		275	4.1	98	1.63	10	11	5.8	195	3.25	10	12	9.1	481	8.02	10	11
Coming Soon	3.00	300	4.3	102	1.71	10	11	6.1	205	3.42	10	11	9.1	502	8.37	10	12
	3.25	325	4.3	106	1.76	10	11	6.2	214	3.57	9	11	9.1	523	8.72	11	12
	3.50	350	4.4	109	1.82	10	11	6.4	222	3.70	9	10	9.1	542	9.03	11	13
	3.75	375	4.6	113	1.89	9	11	6.4	228	3.80	10	11	9.1	562	9.37	12	13
	Coming Soon	1.75	175	---	---	---	---	---	4.9	199	3.32	11	12	7.6	501	8.35	12
2.00		200	3.7	212	3.53	11	13	5.2	212	3.53	11	13	8.2	530	8.83	10	12
2.25		225	3.8	225	3.75	11	13	5.3	225	3.75	11	13	8.4	560	9.33	11	12
2.50		250	4.0	238	3.97	10	12	5.5	238	3.97	10	12	8.5	589	9.82	11	12
2.75		275	4.1	249	4.15	10	11	5.8	249	4.15	10	11	9.1	619	10.32	10	11
Coming Soon	3.00	300	4.3	261	4.35	10	11	6.1	261	4.35	10	11	9.1	646	10.77	10	12
	3.25	325	4.3	272	4.53	9	11	6.2	272	4.53	9	11	9.1	673	11.22	11	12
	3.50	350	4.4	282	4.70	9	10	6.4	282	4.70	9	10	9.1	701	11.68	11	13
	3.75	375	4.6	293	4.88	9	11	6.4	293	4.88	9	11	9.1	727	12.12	12	13
	Coming Soon	1.75	175	---	---	---	---	---	4.9	265	4.42	11	12	7.6	659	10.98	11
2.00		200	3.5	144	2.40	12	14	5.2	283	4.72	11	13	8.2	703	11.72	10	12
2.25		225	3.8	153	2.55	11	13	5.3	300	5.00	11	13	8.4	745	12.42	11	12
2.50		250	4.0	161	2.69	10	12	5.5	317	5.28	10	12	8.5	786	13.10	11	12
2.75		275	4.1	169	2.81	10	12	5.8	333	5.55	10	12	9.1	825	13.75	10	11
Coming Soon	3.00	300	4.3	177	2.94	10	11	6.1	348	5.80	10	11	9.1	862	14.37	10	12
	3.25	325	4.3	183	3.05	10	11	6.2	362	6.03	9	11	9.1	897	14.95	11	12
	3.50	350	4.4	190	3.17	10	11	6.4	375	6.25	9	10	9.1	931	15.52	11	13
	3.75	375	4.5	195	3.25	10	11	6.4	384	6.40	9	10	9.1	964	16.07	12	13

Radius measured on a 4" high riser. \* To obtain full radius reduction for the MP1000 and MP2000, operate at a maximum of 2.1 Bars/207 kPa.  
 \*\* When operating the MP3000 at full radius reduction maintain a minimum pressure of 2.8 Bars/276 kPa to assure reliable operation.



MP ROTATOR®

### MP Rotator Performance Data – Metric

Arc	Pressure Bars	kPa	MP Corner Radius: 2.4 to 4.6 m Adjustable Arc Color Code: Turquoise			
			Color	Radius m	LPH	Flow LPM
45°	1.75	175	---	---	---	0.61
	2.00	200	3.5	36	3.5	0.63
	2.25	225	3.8	38	4.0	0.68
	2.50	250	4.0	41	4.0	0.70
	2.75	275	4.1	42	4.3	0.73
90°	3.00	300	4.3	44	4.3	0.75
	3.25	325	4.3	45	4.4	0.78
	3.50	350	4.4	47	4.4	0.81
	3.75	375	4.5	49	4.5	0.81
	105°	1.75	175	3.2	69	3.2
2.00		200	3.5	76	3.5	1.27
2.25		225	3.8	79	3.8	1.31
2.50		250	4.0	84	4.0	1.40
2.75		275	4.1	86	4.1	1.44
135°	3.00	300	4.3	94	4.3	1.57
	3.25	325	4.3	98	4.3	1.63
	3.50	350	4.4	100	4.4	1.67
	3.75	375	4.5	104	4.5	1.73
	157.5°	1.75	175	3.2	80	3.2
2.00		200	3.5	89	3.5	1.48
2.25		225	3.8	92	3.8	1.53
2.50		250	4.0	98	4.0	1.63
2.75		275	4.1	102	4.1	1.70
180°	3.00	300	4.3	110	4.3	1.83
	3.25	325	4.3	113	4.3	1.88
	3.50	350	4.4	117	4.4	1.94
	3.75	375	4.5	120	4.5	2.00

### MP Rotator Performance Data – Metric

Nozzle Model	Pressure Bars	kPa	MPLCSS15 MPRCS515 MPSS530			
			Color	Unadjusted Radius LPH	Reduced Radius LPH	Precip Rate mm/hr
MP Left Strip	2.00	200	43	30	12	
	2.25	225	45	33	12	
	2.50	250	48	35	12	
	2.75	275	50	36	12	
	3.00	300	52	38	12	
MP Right Strip	3.25	325	54	40	12	
	3.50	350	56	41	12	
	3.75	375	58	43	12	
	2.00	200	43	30	12	
	2.25	225	45	33	12	
MP Side Strip	2.50	250	48	35	12	
	2.75	275	50	36	12	
	3.00	300	52	38	12	
	3.25	325	54	40	12	
	3.50	350	56	41	12	
MP Side Strip	3.75	375	58	43	12	
	2.00	200	85	60	12	
	2.25	225	90	66	12	
	2.50	250	95	69	12	
	2.75	275	100	73	12	
MP Side Strip	3.00	300	104	76	12	
	3.25	325	108	79	12	
	3.50	350	113	83	12	
	3.75	375	117	86	12	

Auckland NZ

PH: (09) 919 7600

FAX: (09) 919 7604

www.aquaspec.co.nz

0800 353 966

Christchurch NZ

PH: (03) 968 3230

FAX: (03) 968 3231