

AQUILA

Single-jet cold water meter Class C - Qn 1.5 m³/hour

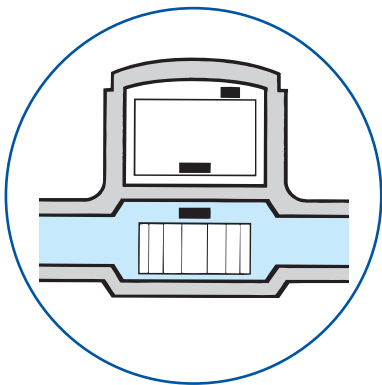
Aquila Qn 1.5 m³/hour is a main meter designed for metering cold water. It uses widely proven technology.

Aquila Qn 1.5 m³/hour is characterised by its accurate metering capability, particularly with high flow rates, its ruggedness and its resistance to fouling. Its profiled connections make it immune to disturbances in the piping before or after the meter.

Aquila Qn 1.5 m³/hour has class C EEC approval in the horizontal position. It has a 15-mm diameter and is 170 mm or 165 mm long.

Because Aquila Qn 1.5 m³/hour is modular, it can be fitted with the Izar radio reading system or a Pulsar pulse emitter, which enables the use of Draco metering systems and Cursa consumption analysers. These devices may be installed from the start or at a later time.

Aquila Qn 1.5 m³/hour has a housing for a non-return valve, which does not affect the metrology characteristics of the meter.



water range



modularity

Main technical characteristics

DESIGNATION

Aquila

Calibration DN	mm	15
----------------	----	----

MEASURING RANGE (m³/h)

		Legal tolerance	
Start flowrate			0.006
Minimum flowrate	Q _{min.}	+/- 5%	0.015
Transition flowrate	Q _t	+/- 2%	0.0225
Nominal flowrate	Q _n	+/- 2%	1.5
Maximum flowrate	Q _{max.}	+/- 2%	3
Overload flow rate*			6

* in the EMT limits during one hour.

EEC APPROVAL

Class	C - H
Approval number	FO4 - G204

TEMPERATURES AND PRESSURE

Max. temperature	°C	30
Max. service pressure		16 bar

HEAD LOSS

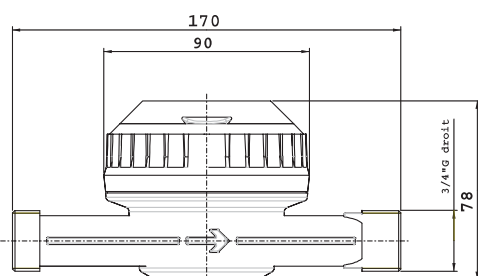
Kvs ($\Delta P = Q^2 / Kvs^2$)	3.12
----------------------------------	------

DIMENSIONS, WEIGHT AND CONNECTIONS

Length	mm	170*
Width	mm	90
Total height	mm	78
Threaded connectors	G	3/4"
Weight	Kg	1.2

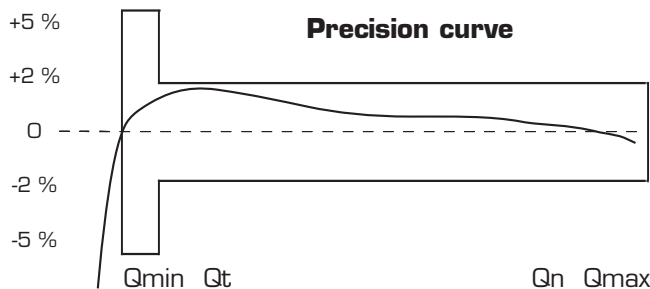
*Other lengths and connections on demand

DIMENSIONS

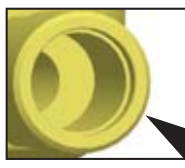


Non-return valve :

Aquila has a housing for a NF-compliant non-return valve that does not affect the metrology performance of the meter.



Options : pulse emitter
Pulsar : 1 pulsar/litre



Straight lengths: if there is no straight length before and after the meter, the maximum error tolerances are not exceeded, regardless of the disturbance (standardised disturbance).

Distributed by :



Freephone : 0800 353 966

If you have any question, please do not hesitate to contact us :



HEAD OFFICE B.P. 10160 - 67 rue du Rhône - 68304 Saint-Louis Cedex - France
 Tel. +33 (0)3.89.69.54.00 - Fax +33 (0)3.89.69.72.20
 Web: www.sappel.com - E-mail: info@sappel.com

EXPORT B.P. 10160 - 67 rue du Rhône - 68304 Saint-Louis Cedex - France
 Tel. +33 (0)3.89.69.54.21 - Fax +33 (0)3.89.69.54.22
 E-mail: export@sappel.com

Non contractual document. Please have the features specified before ordering.

Imprimé P. BIELER S.A. - 68630 Huningue