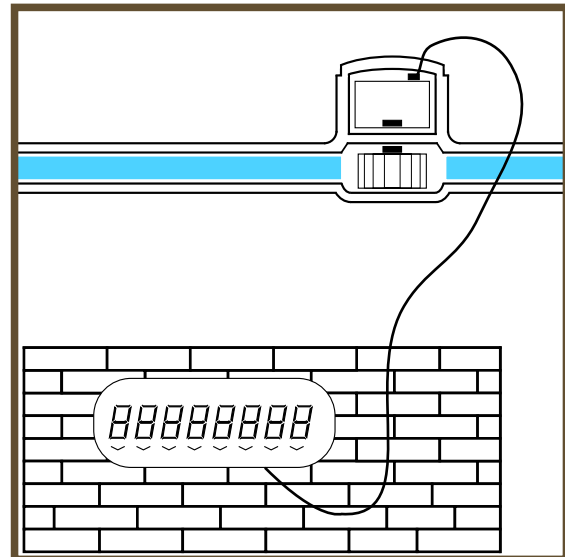


REMOTE REPEATER

Remote electronic meter display

The Sappel remote repeater is the ideal tool for the transmission of readings from a meter fitted with a dry-contact pulse emitter. It is fully compatible with all meters of this type. Installed in an easily accessible location, it offers permanent access to metering data. Of simple design, this unit functions autonomously thanks to a built-in battery, the charge state of which can be checked. The large LCD display makes meter reading easier. Using the four touch-buttons, the unit is easy to program once installed.



Main technical characteristics

Totalizer

Type of display	: Liquid crystal
Digit height	: 8.8 mm
Indicator range	: 99 999 999
Units of display	: 1, 10, 100, 1000 litres.

Box

Dimensions	: 135 x 100 x 33 mm (width x height x depth)
Weight	: 250 grams
Material	: Box made of ABS with polycarbonate cover
Protection index	: IP 54 (drip-proof)
Connection cable	
- Resistance	: 90 Ω /km
- Max. length	: 10 m (dry contact), 100 m (Pulsar TED), please contact us for longer lengths.
- Section	: 0.34 mm ²
- Diameter	: 4 mm
Sealing	: wire and seal / or label
Mounting	: wall-mounting with 2 screws (included) and wall dowels
Installation	: See technical notice NTA 030

Working principle

Working temperature limits	: from - 15 to + 60 °C
Reading temperature limits	: from - 5 à to + 50 °C
Battery power	
- Type of battery	: Lithium 3.6 V / 2000 mAh, battery replaceable
- Battery life	: 3 to 7 years depending on operating conditions
Function	: totalizing

The unit can be programmed using four buttons on the housing. It is protected by means of a programmable access code.

Pulse emitter

Type	: Dry contact (ex : Pulsar or equivalent), electronic (Pulsar TED)
Frequency	: up to 8 Hz, minimum pulse duration 45 ms
Pulse weight	: 0.1 - 1 - 10 - 100 or 1000 litres as set by the user

Electromagnetic compatibility

This device complies with the European directive on electromagnetic compatibility.

Non contractual document. Please have the features specified before ordering.

Distributed by :



Freephone : 0800 353 966

If you have any question, please do not hesitate to contact us :



HEAD OFFICE B.P. 160 - 67 rue du Rhône - 68304 Saint-Louis Cedex - France
Tel. +33 (0)3.89.69.54.00 - Fax +33 (0)3.89.69.72.20
Web: www.sappel.com - E-mail: info@sappel.com

EXPORT B.P. 160 - 67 rue du Rhône - 68304 Saint-Louis Cedex - France
Tel. +33 (0)3.89.69.54.21 - Fax +33 (0)3.89.69.54.22
E-mail: export@sappel.com

Imprimerie P. BIELER S.A. - 68300 Huingue