

DOSING DEVICE

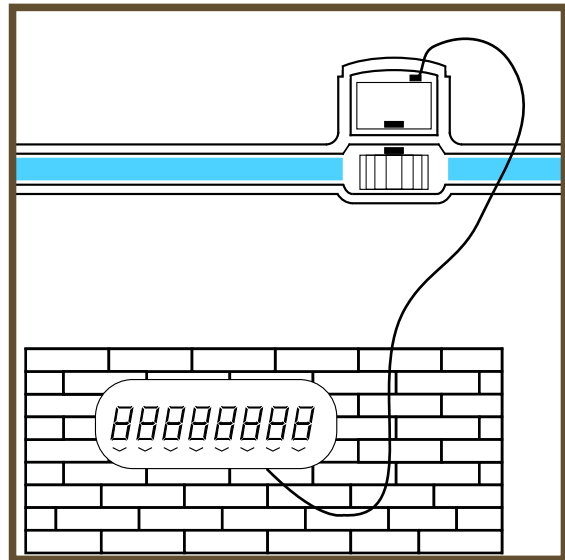
Remote electronic pre-selection and display

The Sappel dosing device is a multi-functional appliance ideal for pre-selection of a fluid volume entering into an industrial process.

The Sappel dosing device offers 5 functions:

- totalizer with manual reset,
- countdown pre-selector with manual reset to required figure,
- pulse divider,
- instantaneous flowrate display,
- remote repeater.

Designed for functional simplicity, a built-in battery ensures autonomous operation and a battery check function is provided.



The large digits on the LCD display render data reading easier.

Four touch-buttons render programming during installation extremely simple.



Main technical characteristics

Totalizer

Type of display	: Liquid crystal
Digit height	: 8,8 mm
Indicator range	: 99 999 999
Units of display	: 1, 10, 100, 1000 litres

Box

Dimensions	: 135 x 100 x 33 mm (Width x height x depth)
Weight	: 250 grams
Material	: Box made of ABS with polycarbonate cover
Protection level	: IP 54 (drip-proof)
Connection cable	
- Resistance	: 90 Ω /km
- Max. length	: 10 m (dry contact), 100 m (Pulsar TED), please contact us for longer lengths
- Section	: 0,34 mm ²
- Diameter of cable passage	: 4 mm
Sealing	: wire and seal / or label
Mounting	: wall-mounting with 2 screws (included) and wall dowels.
Installation	: See technical manual NT 034

Working principle

Working temperature limits	: - 15°C to + 60 °C
Reading temperature limits	: - 5°C to + 50 °C
Battery power	
- Type of battery	: Lithium 3.6 volts / 2000 mAh, battery replaceable
- Battery life	: 3 to 7 years depending on operating conditions
Function	: Totalizer meter with manual reset, countdown preselector, pulse divider, instantaneous flowrate display, meter index reading.

The dosing machine can be programmed using four buttons on the housing. It is protected by means of a programmable access code.

Pulse emitter

Type	: Dry contact (ex : Pulsar or equivalent), electronic (Pulsar TED)
Frequency	: up to 8 Hz, minimum pulse duration 45 ms
Pulse weight	: 0.1 - 1 - 10 - 100 - or 1000 litres, as set by the user
Out-put signal	: Open-collector transistor : max. breaking capacity 5 VA ; max. voltage. 48 V DC ; max. current. 250 mA

Electromagnetic compatibility

This device complies with the European directive on electromagnetic compatibility.

Distributed by :



Freephone : 0800 353 966

If you have any question, please do not hesitate to contact us :



HEAD OFFICE B.P. 160 - 67 rue du Rhône - 68304 Saint-Louis Cedex - France
Tel. +33 (0)3.89.69.54.00 - Fax +33 (0)3.89.69.72.20
Web: www.sappel.com - E-mail: info@sappel.com

EXPORT B.P. 160 - 67 rue du Rhône - 68304 Saint-Louis Cedex - France
Tel. +33 (0)3.89.69.54.21 - Fax +33 (0)3.89.69.54.22
E-mail: export@sappel.com