

K-010 KINETIC AIR VALVE

Reliable operation reduces water hammer incidents.

Dynamic design allows high velocity air discharge, up to 0.8 bar differential pressure; Preventing premature closing.

Lightweight, small dimensions, simple and reliable structure.

Special nozzle design: combination of bronze and E.P.D.M rubber, assures long-term maintenance free operation.

The drainage outlets enables removal of excess fluids.

All Operating parts are made of specially selected corrosion resistant materials.

Standard metal body - baked polymer coating.

Threads are available in BSPT/NPT.

Flanges are available in BS/ISO/ANSI standards.

Working pressure range 0.2-100 bar (3-1400 psi).

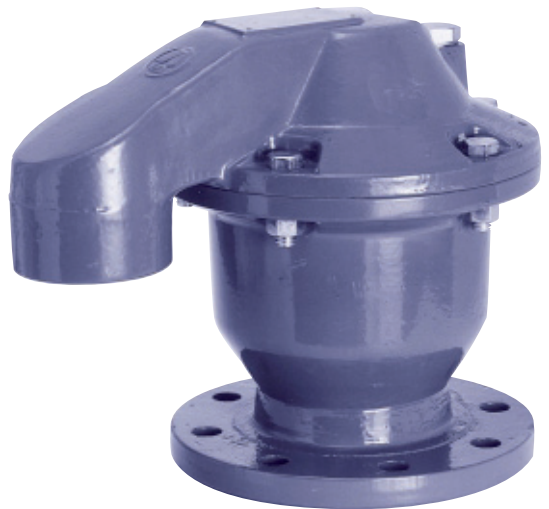
Available in 2" (50mm) - 8" (200mm).

Options

- K-010 - Working Pressure up to 16 bar
- K-060HF - Working Pressure up to 16 bar
- K-012 - Working Pressure up to 25 bar
- K-062HF - Working Pressure up to 25 bar
- K-014 - Working Pressure up to 40 bar
- K-016 - Working Pressure up to 64 bar
- K-100 - Working Pressure up to 100 bar

Ordering

Upon ordering, please specify: model, size, working pressure, threads/flanges standard and type of liquid.



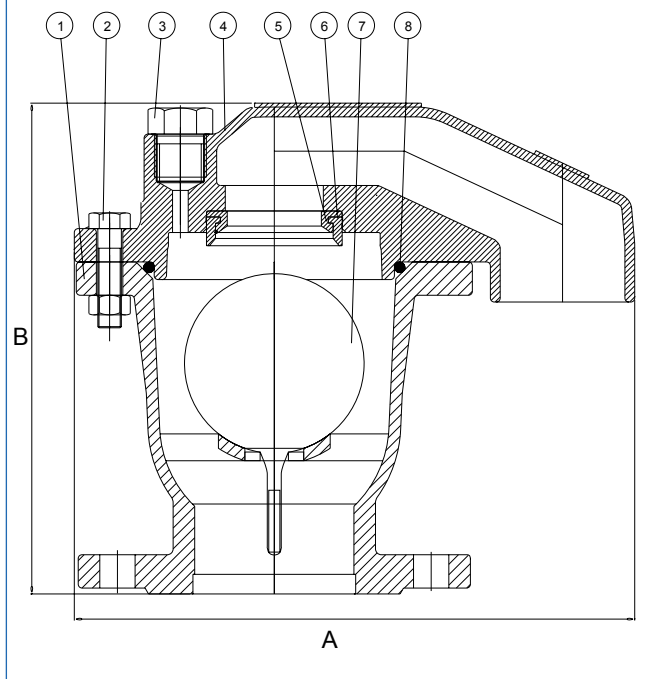
ECK0102000

Auckland NZ
PH: (09) 919 7600
FAX: (09) 919 7604

Distributed
by: **aquaspec**
www.aquaspec.co.nz 0800 353 966

Christchurch NZ
PH: (03) 968 3230
FAX: (03) 968 3231

PARTS LIST AND SPECIFICATION

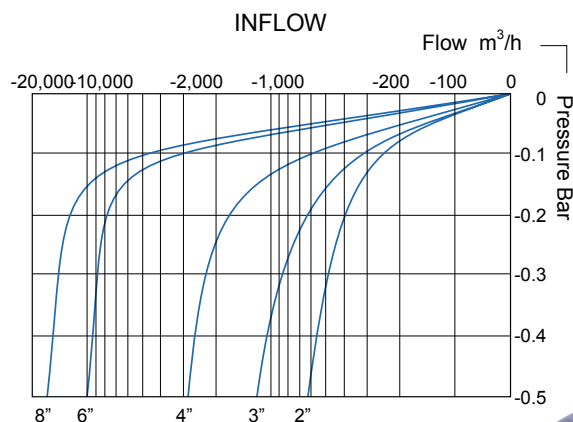
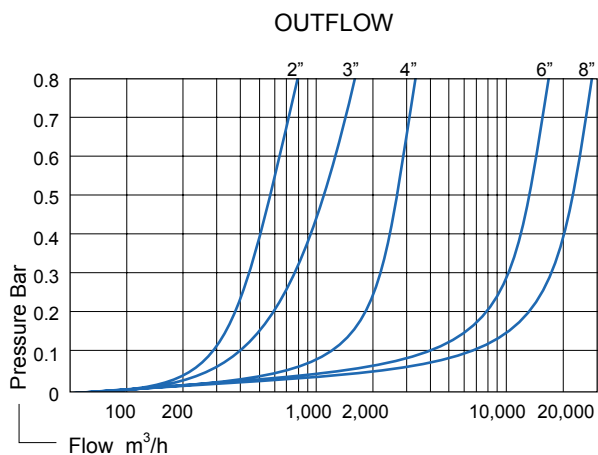


No. Part	Material
1. Body 16 bar	Cast Iron ASTM A-48 CL.35B
25 bar	Sphero Nodular STM A-536 60-40-18
40, 64, 100 bar	Cast Steel ASTM A-216 WCB
2. Bolt and Nut	Galvanized Steel, Chromate plated
3. Plug	Brass ASTM B124
4. Cover 16 bar	Cast Iron ASTM A-48 CL.35B
25 bar	Sphero Nodular STM A-536 60-40-18
40, 64, 100 bar	Cast Steel ASTM A-216 WCB
5. Nozzle Seat	Bronze ASTM B-62 B271 C83600
6. Nozzle Seal	Natural and Synthetic Rubber
7. Float 2"-4"	Polycarbonate
6"-8"	Stainless Steel SAE 304L
8. O-Ring	BUNA-N
* Basket in 2"	Polypropylene
* Protective Cover in 6",8"	Cast Iron ASTM A-48 CL.35B
25 bar	Sphero Nodular STM A-536 60-40-18
40, 64, 100 bar	Cast Steel ASTM A-216 WCB

DIMENSIONS AND WEIGHTS

Nominal Size	A	B	Weight Kg (PN 16)	Weight Kg (PN 25)	Weight Kg (PN 40)	Orifice Area mm ²
25mm1" Threaded	132.5	226.6	3.4			794
50mm2" Threaded	160.0	236.5	8.6			794
50mm2" Flanged	160.0	242.0	11.4	18.0	19.0	794
80mm3"	286.0	250.0	17.5	17.5	33.0	1809
100mm 4"	336.0	272.0	27.0	27.0	48.0	3317
150mm 6"	552.5	525.0	77.0	77.0	92.0	17662
200mm 8"	552.5	530.0	85.0	85.0	107.0	17662

KINETIC AIR DISCHARGE CHART



Auckland NZ
PH: (09) 919 7600
FAX: (09) 919 7604

Distributed
by: **aquaspec**
www.aquaspec.co.nz 0800 353 966

Christchurch NZ
PH: (03) 968 3220
FAX: (03) 968 3221